



Fitzwilliam Wentworth Estate

HERITAGE | LANDSCAPE | ECONOMY | COMMUNITY

Estate Office • Wentworth • Rotherham
South Yorkshire • S62 7TD
Telephone 01226 742041 • Fax 01226 350292
Email office@wentwortheestate.co.uk
www.wentwortheestate.co.uk

97 Main Street Wentworth Rotherham S62 7TN

TO LET Unfurnished
Guide Rent £625pcm

A nicely proportioned refurbished 2-bedroom cottage in an attractive courtyard setting.

Location:

Located on Main Street in the centre of Wentworth village.



The accommodation (see floor plan over):

This property has been subject to comprehensive period-style refurbishment including new kitchen and bathroom fittings. It comprises a single reception room and compact kitchen with useful pantry/store on the ground floor and 2 double bedrooms and comfortable bathroom on the first floor. Total floor area approx. 753sq. ft.

Outside:

Rear yard with small storage shed.

Services:

All mains services including gas combi central heating.

Council Tax Banding: Band C.

Term:

The property will be available on an Assured Shorthold Tenancy for an initial term of 12 months.



Rental:

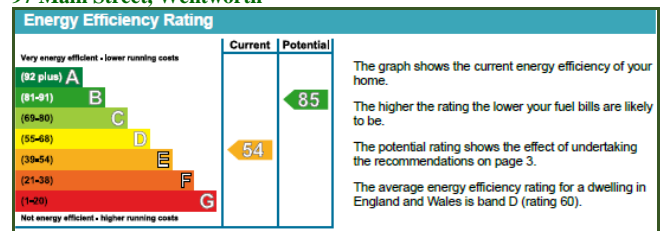
Offers of rental are invited in the region of £625per calendar month payable monthly in advance by bank standing order. The Tenant will be fully responsible for all other outgoings on the property.

Deposit:

A deposit of one month's rent will be payable prior to commencement of the Tenancy and will be returned on termination, subject to all commitments having been met by the Tenant.

Energy Efficiency Rating:

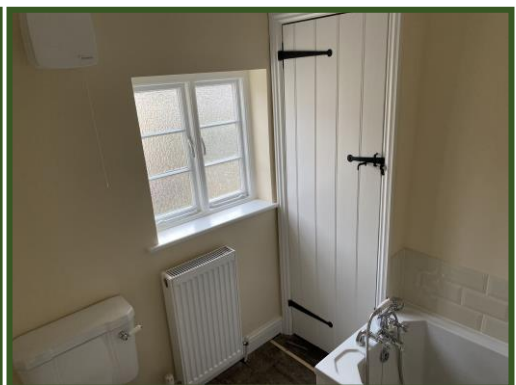
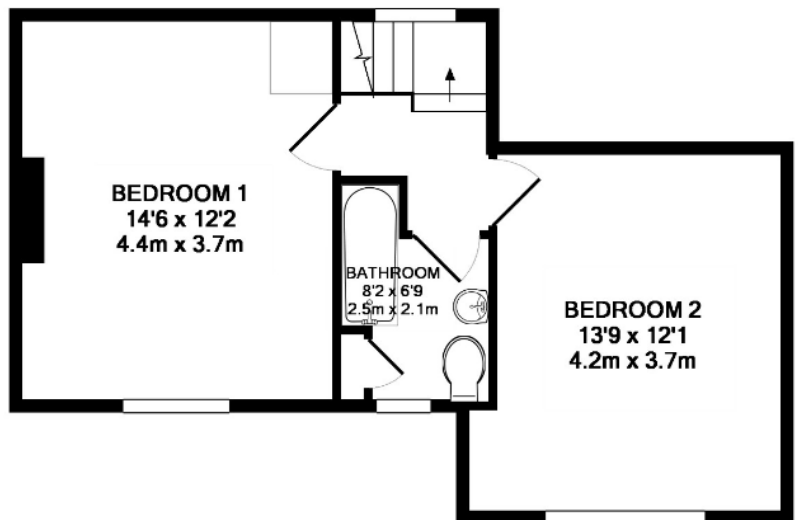
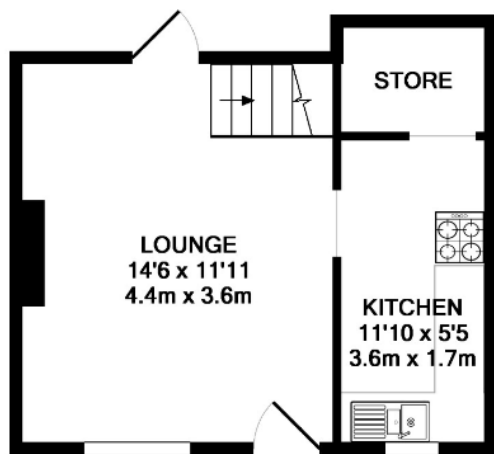
97 Main Street, Wentworth



To view:

Due to covid-19 restrictions our normal letting routine has been amended to meet government guidance. If you are interested in this property, in the first instance, please complete the revised application form (downloadable from the property page) and return to office@wentwortheestate.co.uk

Floor Plans, Photographs & Tenancy Plan



Fitzwilliam Wentworth Estate

HERITAGE | LANDSCAPE | ECONOMY | COMMUNITY