



# Fitzwilliam Wentworth Estate

HERITAGE | LANDSCAPE | ECONOMY | COMMUNITY

Estate Office • Wentworth • Rotherham  
South Yorkshire • S62 7TD  
Telephone 01226 742041 • Fax 01226 350292  
Email office@wentwortheestate.co.uk  
www.wentwortheestate.co.uk

## 18 Street Cottages Street Lane Wentworth

**TO LET Unfurnished  
Guide Rent £750 pcm**

*Fully refurbished 2 bedroom terraced cottage*

### Location:

Located on Street Lane (off Coley Lane) near to the village of Wentworth.



### The accommodation (see floor plan over).

A spacious 2 bed property with kitchen, laundry area and ground floor bathroom. The property has been subject to comprehensive refurbishment including; wiring, plumbing, kitchen and bathroom fittings. The sitting room is fitted with an open fire.

### Outside:

Gardens to front and side. Storage sheds and off road parking.



### Services:

Mains water, electricity and combination boiler gas heating.

### Term

The property will be available on an Assured Shorthold Tenancy for an initial term of 12 months.



### Rental

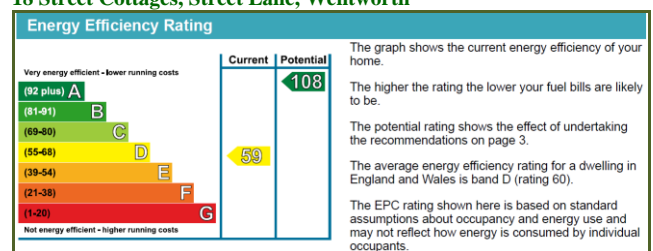
Offers of rental are invited in the region of £750 per calendar month payable monthly in advance by bank standing order. The Tenant will be fully responsible for all other outgoings on the property.

### Deposit

A deposit of one month's rent will be payable prior to commencement of the Tenancy and will be returned on termination, subject to all commitments having been met by the Tenant.

**Council Tax Banding:** Band C.

### Energy Efficiency Rating 18 Street Cottages, Street Lane, Wentworth



### To view:

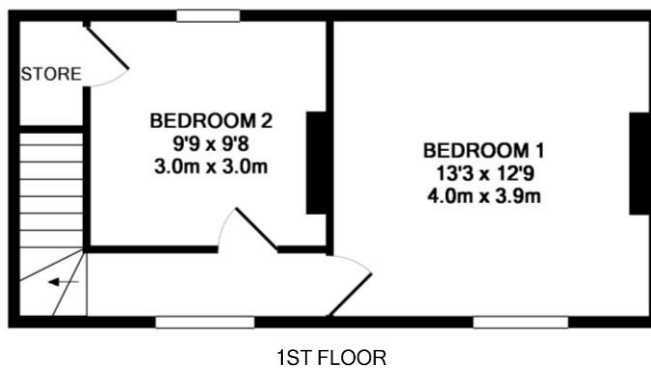
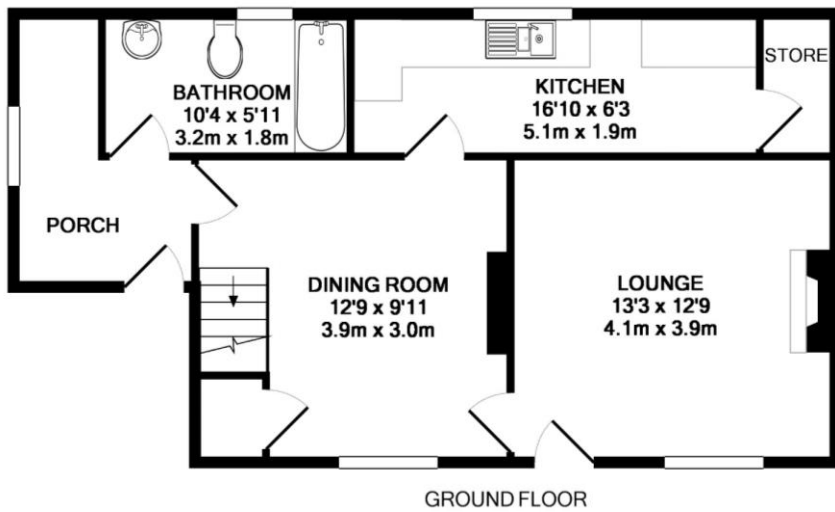
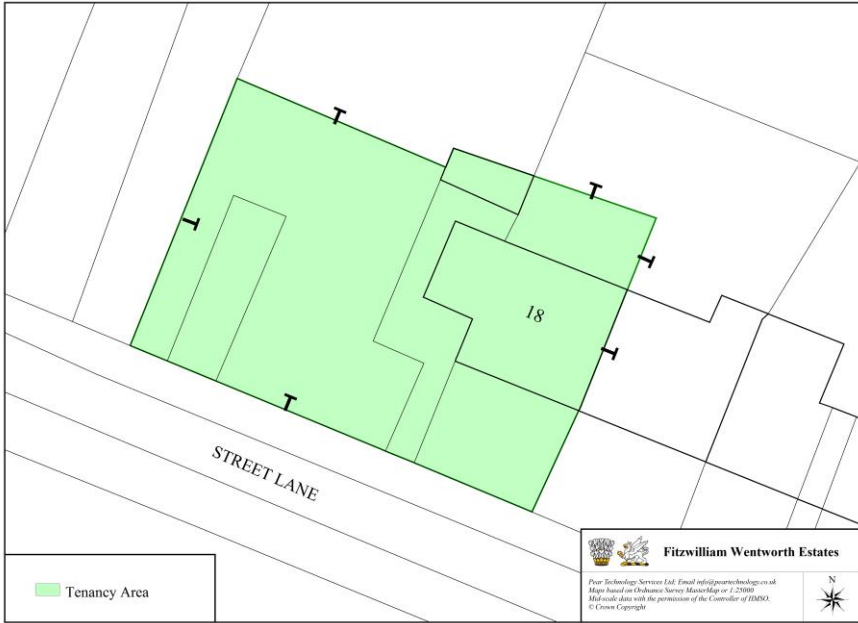
Contact Miss Rachel Towers at the Estate Office on 01226 742041 or press enquire via webpage, providing your contact details.

*Note: Viewings are undertaken at your own risk. Vacant property can be hazardous. Beware of slip/trip hazards, naked wires, sharp surfaces and poorly lit spaces etc. Do not interfere with plumbing or wiring installations etc. Children are to be under the charge of accompanying adults and must be supervised at all times.*

Particulars prepared: October 2017 Ref: ME648

Page 1 of 2

**Photographs, Tenancy & Floor Plans**



**Fitzwilliam Wentworth Estate**

HERITAGE | LANDSCAPE | ECONOMY | COMMUNITY